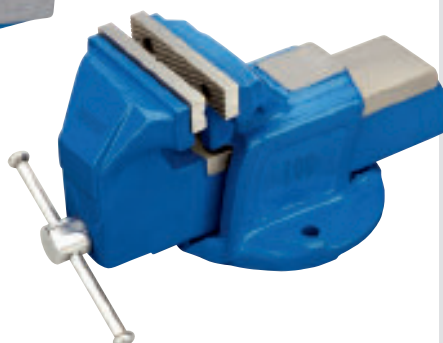


1
ENGINEER'S BENCH VICES

Quality cast iron body with steel screw and handle. Hardened carbon steel interchangeable jaws. Carton packed.

| Stock No. | Part No. | Jaw Width |
|-----------|----------|-----------|
| 45230 | BV100/L | 100mm |
| 45231 | BV125/L | 125mm |
| 45232 | BV150/L | 150mm |



2 BV2/L
ENGINEER'S BENCH VICES

Good quality grey cast iron with trapezoidal thread lead screw. Hardened carbon steel interchangeable jaws. Carton packed.

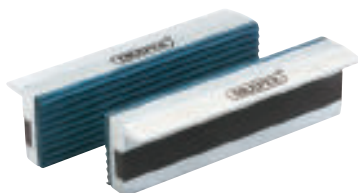
| Stock No. | Jaw Width |
|-----------|-----------|
| 44506 | 100mm |
| 45783 | 150mm |



3 BV-SB2
SWIVEL BASES FOR ENGINEER'S BENCH VICES

Swivel bases for use with Engineers Bench Vices Stock Nos. 44506 and 45783. Manufactured from good quality grey cast iron with three fixing legs and two clamping blocks. Sold loose.

| Stock No. | For Vice |
|-----------|---------------------|
| 45784 | For Stock No. 44506 |
| 45785 | For Stock No. 45783 |



4
SOFT JAWS FOR ENGINEER'S VICES

Aluminium with heavy duty soft rubber face to prevent marking. Supplied with heavy duty magnets which stick to the face of the vice jaws. Display packed.

| Stock No. | Part No. | Size |
|-----------|----------|-------|
| 14178 | SJ100B | 100mm |
| 14180 | SJ150B | 150mm |



5 HV100
36mm HAND VICE

Hand held vice for the secure clamping of component parts prior to grinding, drilling, etc. Carton packed.

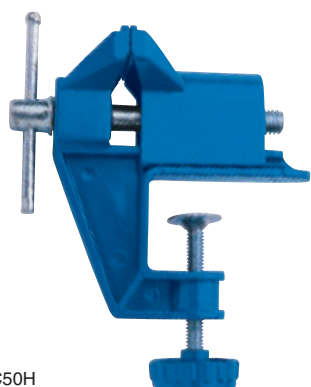
| Stock No. | Jaw Opening |
|-----------|-------------|
| 30785 | 19mm |



6 1709T
75mm BENCH VICE

Cast iron with serrated curved jaws. Bench clamping screw 40mm capacity manufactured from zinc plated carbon steel. Display packed.

| Stock No. | Jaw Opening |
|-----------|-------------|
| 38267 | 58mm |



7 VC50H
55mm HOBBY VICE

Diecast aluminium with plated jaws and bench clamp. Display carton.

| Stock No. | Jaw Opening |
|-----------|-------------|
| 14145 | 50mm |

8 VAC 10/L
75mm VACUUM VICE

Versatile swivel vice with powerful suction base which fixes to any smooth surface. Swivelling head allows many varied positions. V grooved jaws for holding cylindrical and irregular shapes. Supplied with removable soft rubber safety jaw covers. Display carton.

| Stock No. | Jaw Opening |
|-----------|-------------|
| 45245 | 70mm |

